

# YUMA PARENTS AS TEACHERS YPAT SP & YPAT2



**Easter Seals**  
**Blake Foundation**



**FIRST THINGS FIRST**  
*Ready for School. Set for Life.*

# Parents As Teachers An Evidence Based Model

## Family Guidelines

Within 90 days all screenings are completed and 3 goals established in the areas of child development, parent goal, and family goal. 85%

Families must be retained for at least 2 years. 61%

Families must receive at least 24 visits annually. 80%

Families must attend Group Connections. 75%

## Educator Guidelines

Bachelor's Degree – 9 out of 11 educators have BA in related field. Two are currently on education plan.

Completion of Visit Record within 2 days – 80%

Complete 40-45 visits per month. – 80%

20 hours of professional development annually. 100%

# OUTREACH EFFORTS

- **Continuous monthly outreach to service agencies including: Pediatricians, dental offices, libraries, school districts, etc.**
- **Monthly Outreach at DES & Sunset Clinics throughout the county.**
- **Collaboration with AZEIP**

# **ENROLLMENT & SCREENINGS**

## **July 2013 to Present**

### **SPECIAL NEEDS**

**Currently Enrolled: 71**

- Total ASQ-3 Screenings: 64**
- Total ASQ-SE Screenings: 55**
- Total Vision Screenings: 12**
- Total Hearing/OAE Screenings: 10**

# **ENROLLMENT & SCREENINGS**

## **July 2013 to Present**

### **TYPICAL**

**Currently Enrolled: 145**

- Total ASQ-3 Screenings: 135**
- Total ASQ-SE Screenings: 72**
- Total Vision Screenings: 18**
- Total Hearing/OAE Screenings: 18**

# REFERRALS & GOALS

## July 2013 to Present

### SPECIAL NEEDS

104 referrals were made – 49 of these services were obtained by families. Others are still in process, or did not obtain service.

243 goals established – 73 of these have been met. The rest are in progress.

### TYPICAL

169 referrals were made – 58 of these services were obtained by families. Others are still in process, or did not obtain service.

446 goals established – 113 of these have been met. The rest are in progress.

# ASQ RESULTS

- **Completed every 6 months**
- **5 domains: Communication, gross motor skills, fine motor skills, problem solving and social emotional.**

**Increase in all domains of 9.5 to 16 points which moves a child from an area of concern or delay to on-target development.**

# PARENT & FAMILY ASSESSEMENTS

- **KIPS- Keys to Interactive Parenting Assessment: 65**  
**Initial: 2 - 3 average score**  
**Reassessment: 4 – 5 average score**

## Life Skills Progression

- 265 Initial: 35.3% = 1-2.5, 64.7% = 3-5 score
- 76 Re-assess: 8.9% = 1-2.5, 91.1% = 3-5



# **GROUP CONNECTIONS**

- **8 Group Connections Per Month**
- **Locations: Yuma, Somerton, San Luis and Wellton**
- **Attendance: Varies from 15 to 35**
- **Topics & Activities:**  
**Presentations from community agencies, family activities and food is provided.**

# **Presentations**



# **Socialization**



# HOLIDAY 2013



# HV SATISFACTION SURVEY

95-99% are satisfied with the program, including: services were easy to find, visits were scheduled at convenient times and program fits family beliefs, culture and values.

“I am very satisfied with the program, thank you for everything you have provided. My educator provides great resources, from her I have learned to be more patient with my children, and have become a better parent”

“I have learned that babies are not too young to start learning. I like to have the list of milestones I should be looking for”

“I have learned to understand my children more. To interact more with them and enjoy them as well. Thank you Silvia for being such a good educator and for your patience in teaching me so many things”.

**THANK  
YOU!**



## Contact Numbers:

Patricia García/Program Supervisor

(928) 783-4003 Ext.33

# *What is Healthy Families?*



- *Healthy Families is a free, confidential, and voluntary home visitation program that serves pregnant women and families of new born.*
- *Healthy Families currently has two programs:*
  - Site # 15 funded by DES (Program Supervisor: Bertha Fuentes)*
  - Site # 70 funded by FTF (Program Supervisor: Patricia Garcia)*



- *Healthy Families screens potential prenatal or postnatal at YRMC, a memorandum of agreement is in place from Monday to Friday 8am-10am*
- *Our collaboration with YRMC has been stable since 1995.*





- *FTF team initiated services in 2010 at CFR*
- *DES transferred from the EXCEL group in 2011 with a full program.*
- *FTF team has served 163 families by Dec 2013*

# Collaborations



- *Healthy Families collaborates with the community in a regular basis*

- \* *CPS S.E.N.S.E. case (Substance Expose Newborn Safe Environment)*

- \* *First Smiles*

- \* *YRMC*

- \* *First Book*

- \* *Project Linus*

- \* *Gymboree and Crazy 8*

- \* *others such as Housing of America, WACOG, Food Bank, Shelters, Sunset clinics, Walk-in Clinics, New Life, CPLC, Kith and Kin Project.*

# *Yearly Site Review*



- Our program receives though site reviews from Central Administration one time a year to unsure we are in compliance with Healthy Families America Best Practice Standards.
- At recent site review, we over exceeded each standard of the Best Practice HFA
  - \*Quality Assurance (100% supervision rate, shadow HV, Phone surveys, chart reviews, Family Goals, ASQ's, etc)

**Performance Measures/Outcome Goals for SOW Year 2**

2013

Standard	Flag #7, 18, 50	Graham #28	LHC #17	YRMC #21	Yuma #15, 70	Pima FAW,8,9,10,11 ,27,81	Cochise #12	Santa Cruz #6	Mohave #33, 43	Tuba City/ #13	Winslow #32	Maricopa SWHD	HFAz Roll (2013)	HFAz 2012 (for comparison)
Families in the target area shall be screened for eligibility according to HFAz Program standards. (Review of QA-12 for period under review provided as pre-site evidence for QA site visits)	50%	100%	95%	100%	82%	93%	81%	61%	40%	100%	96%	100%	83%	78%
Child developmental screenings shall be completed at specified intervals per the Healthy Families Arizona Policies and Procedures Manual. (6-4.B review of completed ASQ's for all (first and all subsequent) target children provided as pre-site evidence for QA site visits)	99%	95%	93%	99%	100%	92%	77%	88%	85%	85%	93%	96%	92%	94%
Families shall have an Individual Family Support Plan completed according to Healthy Families Arizona Policies and Procedures Manual. (Based on case files reviewed at QA site visit)	94%	99%	86%	100%	100%	92%	50%	71%	75%	86%	100%	95%	87%	75%
Staff shall attend required training within the designated timeframes as specified in the Healthy Families Arizona Policies and Procedures Manual. (Review of training logs provided as pre-site evidence for QA site visits)	100%	100%	86%	100%	100%	100%	50%	67%	97%	100%	100%	100%	92%	90%
Required supervisory sessions occur according to Healthy Families Arizona Policies and Procedures Manual. (Review of QA-6 or 11-1.B for direct staff provided as pre-site for QA site visits)	98%	100%	100+%	100%	100%	93%	100%	96%	98%	91%	100%	96%	98%	92%
Families receiving services shall not have a verified report of child abuse and/or neglect while enrolled in the program and for six months following case closure. (Statewide aggregate as reported in the HFAz annual report SFY13)	97.1%	97.1%	97.1%	97.1%	97.1%	97.1%	97.1%	97.1%	97.1%	97.1%	97.1%	97.1%	97.1%	97.9%
Home visits shall be completed according to Healthy Families Arizona Policies and Procedures Manual. (BD-2 aggregate HV rates for all FSS for SV review period)	88%	85%	73%	80%	96%	80%	78%	68%	82%	82%	87%	86%	82%	81%
Families on Creative Outreach levels X and Z shall be re-engaged in the program within 90 days of entering level X or Z. (Based on LMA Summary Report for July-Dec 2012 period)	87%	100%	89%	100%	88%	77%	29%	100%	59%	83%	64%	90%	81%	66%

- All information will be aggregated to reflect each program funded under an individual contract.
- Information gathered in the calendar year during QA site visits will be rolled up into a performance measures report for each contractor by March 31 of the following year.
- Any performance measures that are not at or above the minimum target will be addressed through an action plan.
- Significant performance measure compliance concerns will be elevated to the DCYF Contracts Unit and/or DES Office of Procurement for consideration of formal contract compliance action









ANY

QUESTIONS ? ? ? ?



**PRESENTATION TO FIRST THINGS FIRST  
YUMA REGIONAL COUNCIL  
2.20.14**





# Being a Teen



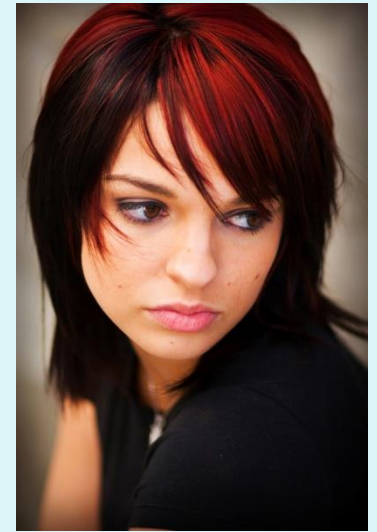
- Teen brain development
  - Brains are not fully developed until the mid-twenties
  - Caught between being a child and being an adult
  - **Focus on the “now”**
  - Decreased ability to self-regulate and delay gratification
  - Increased sleep needs



# Risk Factors for Teen Parents



- Less likely to receive timely and consistent prenatal care
- More likely to live in poverty
- More likely to be a single parent
- More likely to have low educational attainment
- More likely to work in low-wage jobs
- More likely to have repeat unplanned pregnancies



# Risk Factors for Children Born to Teen Parents



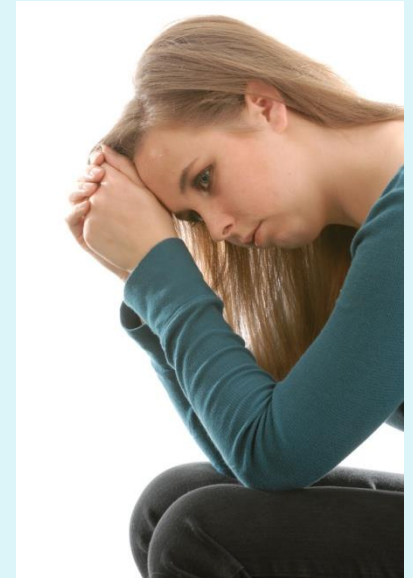
- More likely to be born prematurely and at a low birth weight
- Less likely to have access to consistent health care
- More likely to live in poverty
- More likely to become a teen parent themselves
- More likely to have unidentified developmental delays resulting in Special Education later on



# Challenges with Our Teens



- Unstable living environments
  - Housing/moving out of area
  - Phone numbers/access
- Rescheduling/forgetting appointments
- Pressure from friends/family
- Grandparents taking on the parenting **role, teens don't feel responsibility**
- Mandated services end, so youth stop voluntary services as well



# How Our Services Help



- Intensive service delivery
- Expertise in youth development and working with teen parents (20+ years as an agency, and in Yuma)
- Specialized curriculum
- Reduction of isolation
- Connection to community resources



BREAKING THE GENERATIONAL CYCLES!

# Progress Update



- 32 families currently receiving home visits
- 42 families served since July 2013 (84% of target)
- 81% of youth this year have graduated, earned their GED or been maintained in a school setting
- 99% of youth have had no unplanned repeat pregnancies
- 99% of children are developmentally on track, and those with concerns have been referred to AzEIP
- 100% of youth involved with Juvenile Court have successfully gone off probation

# Client Retention

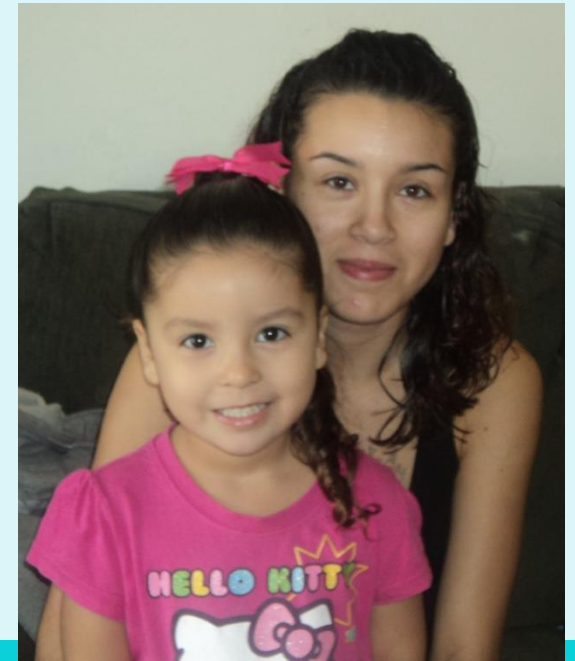


- Typical Retention in home visiting
  - One study (300 participants)—66% retained over 6 months, 38% retained over 1 year, average time in program was 47 weeks (University of Chicago, 2005)
  - Healthy Families America averages 30-35% turnover (2012)
  - MIECHV states that historically, 1/3 of families drop out of prevention programs, especially multi-month models (2013)
  - In a study across 3 long-term models, and 2 short-term models, 52% of early leavers were teen parents, and 93% of early leavers were single at intake (Evidence-Based Home Visiting Initiative, 2012)

# Our Program Retention



- 30% of current clients have been enrolled for 1 year or longer
- 33% of closed clients completed the program as designed or had an appropriate transition to another program
- Strategies for retention
  - Group Connections
  - Consistent visits
  - **Tracking down “unable-to-contact” youth**





# Future Actions

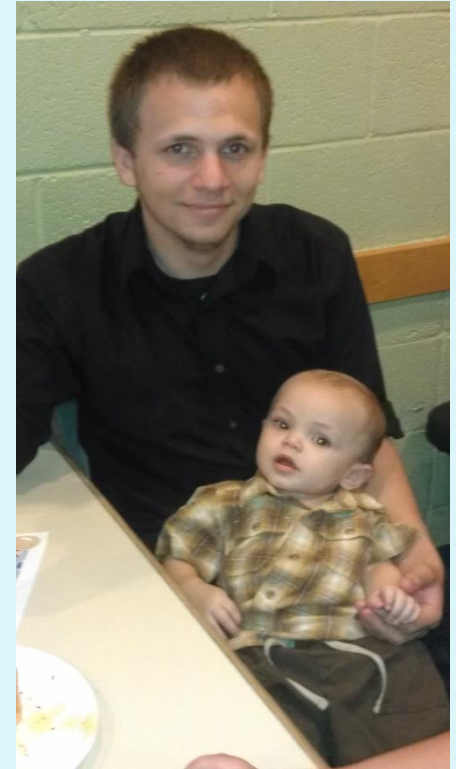


- Recruitment

- Development of marketing flyer tailored to teens
- Referral form for teen consent to contact
- Referral conversation w/ other home visiting programs
- Further development of community contacts
  - ✦ Alternative and traditional high schools
  - ✦ Health Department/Sunset clinics

- Retention

- Starting Group Connection in San Luis
- Providing transportation to Group Connections
- Exploring use of technology/social media to connect with clients



# Successes



- Client Success Stories



# Supporting Our Success



- Barrier:

- Transportation to Groups
- Cost of childbirth classes
- Child care costs/access
- School/work opportunities
- Unidentified developmental delays in children
- High-quality early education
- Access to health care
- Cost of tax preparation
- Access to basic needs
- **Access to children's books**

- Community Partnership:

- Saguaro Transportation
- Maternal Child Health
- CCR&R and scholarships
- YPIC Youth Services
- AzEIP
  
- WACOG Head Start
- Family Planning Clinic
- United Way
- New Life
- Imagination Library



# Building Bright Futures For Teen Parents

## FACT SHEET

### RISK FACTORS FOR TEEN PARENTS

- Less likely to receive timely and consistent prenatal care
- More likely to live in poverty
- More likely to be a single parent
- More likely to have low educational attainment
- More likely to work in low-wage jobs
- More likely to have unplanned repeat pregnancies

### RISK FACTORS FOR CHILDREN BORN TO TEEN PARENTS

- More likely to be born prematurely and at a low birth weight
- Less likely to have access to consistent health care
- More likely to live in poverty
- More likely to become a teen parent themselves
- More likely to have unidentified developmental delays resulting in Special Education later on



### OUR SERVICES

- Intensive service delivery
- Over 20 years experience working with teens in Yuma and around AZ
- Specialized curriculum and training specific to needs of teen parents
- Focus on teen development as well as child development
- Reduction of isolation through Group Connections where teens meet other teens with similar life circumstances
- Focused engagement of fathers
- Connection to community resources



## Success Stories



### PROGRAM OUTCOMES

- 42 families served this year (84%)
- 32 active families
- 81% of youth have graduated, received their GED or been maintained in a school setting
- 99% of youth have had no unplanned repeat pregnancies
- 99% of children are developmentally on track, and those with concerns have been referred to AzeIP
- 100% of youth involved with Juvenile Court have successfully gone off probation
- 30% of current clients have been enrolled for 1 year or longer
- 33% of closed clients completed the program as designed or had an appropriate transition to another program

Yetzy is a very hard working teen mother who had her baby 3 weeks early at the end of October. She has recently been struggling financially now that she is solely responsible to pay rent and other expenses. The Parent Educator helped Yetzy with apartment searching and has encouraged her to make sound choices when it comes to learning how to budget her finances. Yetzy recently decided to move to a smaller place where she will pay half the rent she was previously paying. She has also become a very proud mother since her baby's birth. From the start she knew she wanted to breastfeed Jeremiah, but was not sure if it would fit into her work schedule. The Parent Educator provided support and encouragement to Yetzy by offering information on how to freeze milk and refrigerate it for an extended time in order to continue breastfeeding. Yetzy is a responsible teen mom who benefits a great deal from the support of the Building Bright Futures program.

Lizette, an 18 year old mother has been enrolled for about 10 months. At the time of enrollment she had just given birth to a healthy baby boy named Markes. Since enrolling, Lizette has obtained her high school diploma and has built positive interactions with her son that have encouraged his development. She has received community resources from her Parent Educator and her son has received developmental screenings and free board books. Her Parent Educator encouraged her to begin to read to her son as a newborn. Markes now pats at the pictures of a book when shown to him, he tries to help turn the pages of the book when being read to, he cries when the book ends and smiles when his mom starts the book over.

Julissa, a teen mother of two, became part of Building Bright Futures for Teen Parents when she was referred to us by her probation officer in January 2013. At that time Julissa was living at her mother's house. Julissa has managed to stay out of trouble and has not had any problems with the law. When she started the program, she had not been in school for two years nor was she employed. Julissa and Pedro, the children's father, took the responsibility of parenthood seriously, both knowing that in order for them to be together they needed to do the right thing to provide for their children. Julissa started by renewing her residency status in the United States and shortly thereafter she became a U.S. Citizen. During this time she also studied and prepared herself for the GED test which she passed in June. Julissa works full time as a developmental and health-related needs assistant for children. Pedro has returned to school and will get his Associates Degree in General Studies by March 2014. BBF has witnessed this young couple's determination to be a family as they continue to be part of the program with new goals for continued successes.



**From:** Sam Leyvas  
**Sent:** Tuesday, February 18, 2014 12:33 PM  
**To:** First Things First  
**Subject:** FTF Legislative Update - Regional Councils

Dear Regional Council Members:

This has been a very busy legislative session – particularly with several bills that either directly or indirectly impact FTF. We have spent a significant amount of time at the capitol meeting with legislators over the last month. Generally, what I have found is a growing recognition of and support for the work of First Things First.

Below is an update on bills of particular interest:

**HCR 2003 – Redirecting 25% of FTF funds to DES**

Sponsor: Rep. John Kavanagh

We have been successful in making the case with legislators that redirecting funds from FTF is not a good policy direction nor a solution to the current CPS crisis. The bill was assigned to the Health committee – chaired by Rep. Heather Carter (R-Cave Creek). After several good conversations with Rep. Carter – not only does she share our concerns with HCR 2003, but she has agreed to hold the bill. “Holding the bill” means the committee chair has exercised her prerogative of not granting this bill a public hearing. In short, this bill is effectively dead. However, it’s worth saying that anything can happen in the legislative process and sometimes dead legislation can be resurrected. In the end, I do not believe that this will be the case with HCR 2003.

We have also made good progress in our conversations with Rep. Kate Brophy McGhee (R-North Phoenix). Rep. Brophy McGhee sits on the Health committee, CPS oversight committee, and Gov. Brewer’s CARE Team.

She too had similar concerns with HCR 2003 and I personally believe would have likely voted against this bill had it been heard in committee.

Lastly, I would say that we had strong support from our community partners like Prevent Child Abuse Arizona, the Arizona Chapter of the Academy of Pediatrics, Southwest Human Development, Children’s Action Alliance, and others. They all sent letters opposing HCR 2003 – which I think helped make a strong case for shutting the door on this bill.

**HCR 2018 – Referring back to the ballot every 8 years ballot propositions that require the expenditure of state funds - including FTF**

Sponsor: Rep. Boyer, *et al*

This legislation impacts a wide swath of constituencies including K-12, universities, health care, business, and FTF. This is one of the two very similar bills introduced this session. This particular bill was amended in committee to be on a go-forward basis. Meaning that it is no longer retroactive and thus no longer impacts FTF.

**SCR 1003 - Referring back to the ballot every 8 years ballot propositions that require the expenditure of state funds - including FTF**

Sponsor: Sen. Crandell, *et al*

Very similar to HCR 2018 and retroactive to 1998. Again, this version touches a broad number of constituencies who are all actively lobbying in opposition to this legislation. It is worth noting that in recent years, versions of this bill have been introduced with none having successfully made it through the legislative process. There is a committee hearing this afternoon, so we will get a better sense of how this bill will fare moving forward. We are actively monitoring and will update with developments.

Please let me know if you have any questions or if I can provide any additional information. Thank you,

\_Sam

cc: Regional Staff



**FIRST THINGS FIRST**

*Ready for School. Set for Life.*

**Sam Leyvas**

*Interim Chief Executive Officer & VP of External Affairs*

602.771.5026 Direct

[sleyvas@azftf.gov](mailto:sleyvas@azftf.gov)

[azftf.gov](http://azftf.gov)

**Join the Conversation:**



Quality matters in child care and preschool - [QualityFirstAZ.com](http://QualityFirstAZ.com)